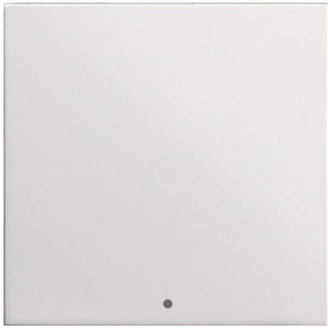


Room Sensor Clima Smart

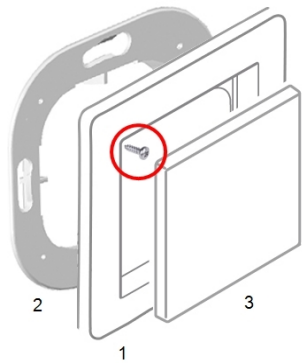
Digital room temperature and humidity sensor with communication via Wifi module 2.4 GHz in connection with the °CALEONbox Clima.



Technical Data

| | |
|----------------------|---|
| Power Supply | 230 VAC |
| Power consumption | 1 W - 2,5 W |
| Measurement Range | 0 °C ... 60 °C / 0 % ... 100 % |
| | Accuracy +/- 1 °C / +/- 6 % Resolution 0.1 °C / 0.1 % |
| Protection Class | IP 20 |
| Dimension | 55 mm x 55 mm |
| Housing Design | plastic housing pure white |
| Installation Methods | Surface / flush-mounted |

Wall Installation



Mount the Room Sensor Clima Smart in a suitable place.



Caution!

Device and function may be damaged. Select a suitable environmental condition. Direct sunlight, sources of heat and cold, e.g. radiators and windows must be avoided.

Mounting in flush-mounted switch box

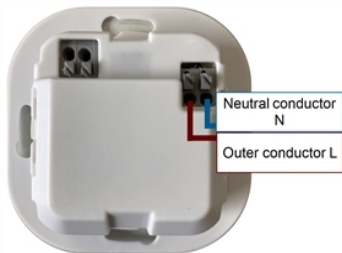
Attach the mounting ring to the switch box. Open the terminals with a screwdriver and make the electrical connection as described below.

Electrical connection

Connect the sensor to the 230 VAC power supply as shown (blue = neutral conductor N, brown = outer conductor L).

Attach insert

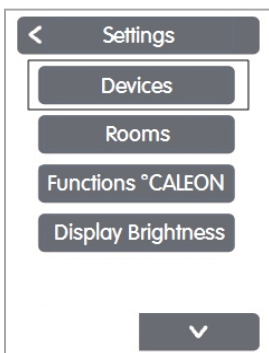
Screw the cover frame (1 - not included in the scope of delivery, art. no.: 82001) to the mounting ring (2) diagonally at the top left and bottom right using the two screws (2.2 x 4.5 mm) supplied. Align the Room Sensor Clima Smart (3) to fit the mounting ring and push it on.



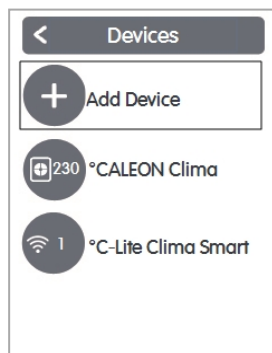
Surface mounting

For surface mounting, use the Mounting set surface-mounted frame high (art. no.: 82003).

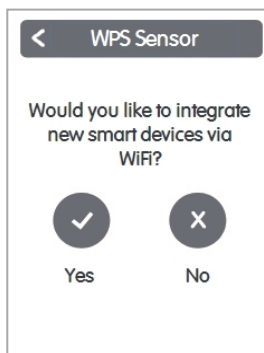
Pairing °CALEON with Room Sensor Clima Smart



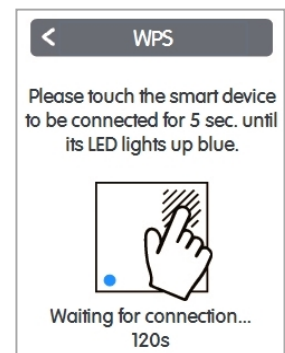
Expert > Settings > Devices



Add Device



Confirm inclusion



Operate smart device

Room Sensor Clima Smart room assignment

There are two ways to assign a room to the Room Sensor Clima Smart:

1. Using the unit ID via the °CALEON menu 'Expert -> Settings -> Rooms -> Room X -> Temperature / Humidity'.
2. As described under 1. via the °CALEON menu in combination with the Touch-To-Assign function (T2A) on the Room Sensor Clima Smart.

Expert > Settings > Rooms

Select or add room

Select sensor type Temperature / Humidity

1. →

Assign sensor

Assignment successful

Touch Room Sensor Clima Smart on one of the three touch areas to assign it to the selected room.

LED lights up blue while the connection is being established.

LED lights up green if the assignment was successful.

Assignment successful

2. →

When opening the sensor list, the Room Sensor Clima Smart automatically switches to Touch-To-Assign mode

Load factory settings

To unpair a Room Sensor Clima Smart with a °CALEON Smart or to reset the Room Sensor Clima Smart to factory settings:

1. Briefly tap the top right of the touch area twice with your finger.
2. Place your finger on the top right of the touch area for a long time. After 5 seconds, the LEDs flash red. Continue to hold until the LEDs go out.
3. Then at the °CALEON Smart in the menu:
Expert > Settings > Devices > WiFi Sensor > Remove to exclude the sensor.

