

## Room Sensor Smart

Digital room temperature sensor with communication via WiFi module 2.4 GHz in conjunction with the °CALEONbox.



### Technical Data

Power Supply	230 VAC
Power consumption	1 W - 2,5 W
Measurement Range	0 °C ... 60 °C
	Accuracy +/- 1 °C   Resolution 0.1 °C
Protection Class	IP 20
Dimension	55 mm x 55 mm
Housing Design	plastic housing pure white
Installation Methods	Surface / flush-mounted

## Wall Installation

Mount the Room Sensor Smart in a suitable place.



### Caution!

Device and function may be damaged. Select a suitable environmental condition. Direct sunlight, sources of heat and cold, e.g. radiators and windows must be avoided.

### Mounting in flush-mounted switch box

Attach the mounting ring to the switch box. Open the terminals with a screwdriver and make the electrical connection as described below.

### Electrical connection

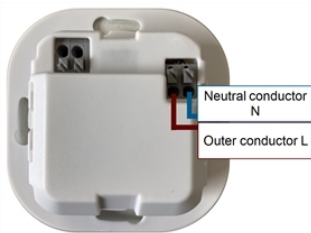
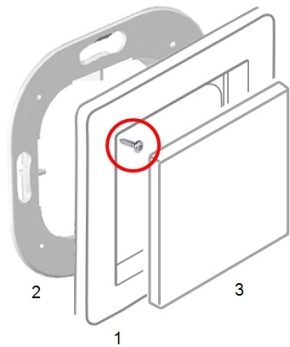
Connect the sensor to the 230 VAC power supply as shown (blue = neutral conductor N, brown = outer conductor L).

### Attach insert

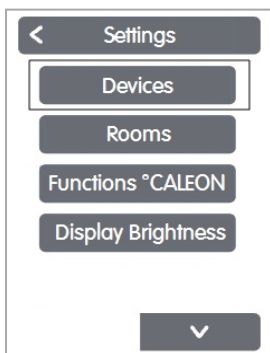
Screw the cover frame (1 - not included in the scope of delivery, art. no.: 82001) to the mounting ring (2) diagonally at the top left and bottom right using the two screws (2.2 x 4.5 mm) supplied. Align the Room Sensor Smart (3) to fit the mounting ring and push it on.

### Surface mounting

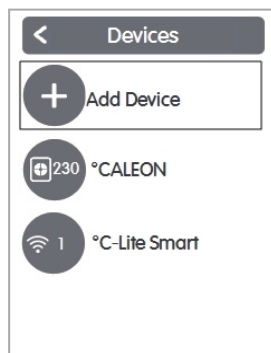
For surface mounting, use the Mounting set surface-mounted frame high (art. no.: 82003).



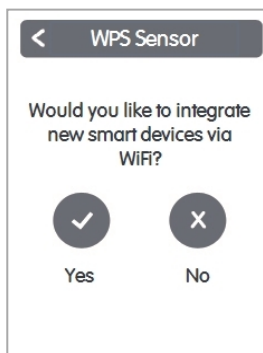
## Pairing °CALEON with Room Sensor Smart



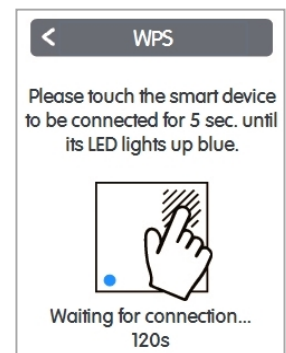
Expert > Settings > Devices



Add Device



Confirm inclusion



Operate smart device

## Room Sensor Smart room assignment

There are two ways to assign a room to the Room Sensor Smart:

1. Using the unit ID via the °CALEON menu 'Expert -> Settings -> Rooms -> Room X -> Temperature'.
2. As described under 1. via the °CALEON menu in combination with the Touch-To-Assign function (T2A) on the Room Sensor Smart.

Expert > Settings > Rooms

Select or add room

Select sensor type Temperature / Humidity

1. →

Assign sensor

Assignment successful

2. →

When opening the sensor list, the Room Sensor Smart automatically switches to Touch-To-Assign mode.

Touch Room Sensor Smart on one of the three touch areas to assign it to the selected room.

LED lights up blue while the connection is being established.

LED lights up green if the assignment was successful.

Assignment successful

## Load factory settings

To unpair a Room Sensor Smart with a °CALEON Smart or to reset the Room Sensor Smart to factory settings:

1. Briefly tap the top right of the touch area twice with your finger.
2. Place your finger on the top right of the touch area for a long time. After 5 seconds, the LEDs flash red. Continue to hold until the LEDs go out.
3. Then at the °CALEON Smart in the menu:  
Expert > Settings > Devices > WiFi Sensor > Remove to exclude the sensor.

